



BRANCH LOCATIONS

APE WEST COAST

2985 Loomis Rd.
Stockton, CA 95205
Ph: (209) 942-2166
Fx: (209) 942-2455
(888) 245-4401
chrisc@apevibro.com

APE GULF

3975 FM Hwy 1485
Conroe, TX 77306
39266 Doyle Dr., Ste. A
Gonzales, LA 70737
Ph: (936) 271-1044
Fx: (936) 271-1046
(800) 596-2877
joew@apevibro.com

APE NORTHEAST

401 Hartle St.
Sayreville, NJ 08872
Ph: (732) 432-6604
Fx: (732) 432-6608
(888) 217-7524
billz@apevibro.com
paulk@apevibro.com

APE MID-WEST

50 Gerber Industrial Dr.
St. Peters, MO 63376
Ph: (636) 397-8400
Fx: (636) 278-4278
(877) 296-8044
edc@apevibro.com

APE MID-ATLANTIC

500 Newtown Rd., #200
Virginia Beach, VA 23462
Ph: (757) 518-9740
Fx: (757) 518-9741
(866) 399-7500
jimmyd@apevibro.com

APE SOUTHEAST

1345 Industrial Park Rd.
Mulberry, FL 33860
Ph: (863) 324-0378
Fx: (863) 318-9409
(800) 570-3844
jimb@apevibro.com
jimc@apevibro.com
wallyb@apevibro.com

APE CORPORATE

7032 South 196th St.
Kent, WA 98032
Ph: (253) 872-0141
Fx: (253) 872-8710
(800) 248-8498
stevec@apevibro.com
kellyg@apevibro.com
chrisw@apevibro.com

APE CANADA

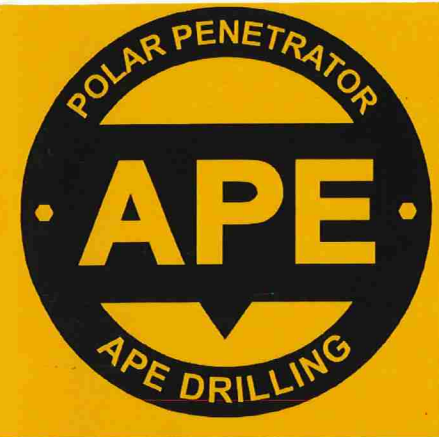
9004B Yellowhead Trail NW
Edmonton, Alberta T5B 1G2
Ph: (780) 474-9888
(855) 328-9888
larrym@apevibro.com
coling@apevibro.com

APE BRAZIL

Rodovia Raposo Tavares Km, 22
Sala 517- Bloco E
Granja Vianna-Cotia-SP 06707
Ph: (+55) 1-197-238-9308
(863) 660-8716
jimc@apevibro.com

APE MEXICO

Avenida Periferico Sur 7800
Sta. Ma Tequetexpan
Tlaquepaque, Guadalajara Jalisco
Mexico CP. 45601
Ph: (786) 991-6875
Fx: (253) 872-8710
1-877-457-5022
frankis@apevibro.com



APE POLAR PENETRATOR

DRILL TOOL CATALOG



The APE product line is protected by, but not limited to the following patent numbers:
5088565A, 5117925A, 5263544A, 5529132A, 5544979A, 5609380A, 5653556A,
5794716A, 6039508A, 6386295B1, 6427402B1, 6431795B2, 6447036B1, 6543966B2,
6648556B1, 6672805B1, 6732483B1, 6736218B1, 6896448B1, 6908262B1, 6942430B1,
6988564B2, 7168890B1, 7392855B1, 7694747B1, 7708499B1, 7824132B1, 7854871B1,
7913771B2, 7950876B2, 7950877B2, 8070391B2, 8181713B2, 8186452B1, 8434969B2,
8496072B2, 20090200055A1. For a more detailed information and a more comprehensive
list of APE patents please visit the website at www.apevibro.com/ver2/APEPatents.asp.

800-248-8498

WWW.APEVIBRO.COM

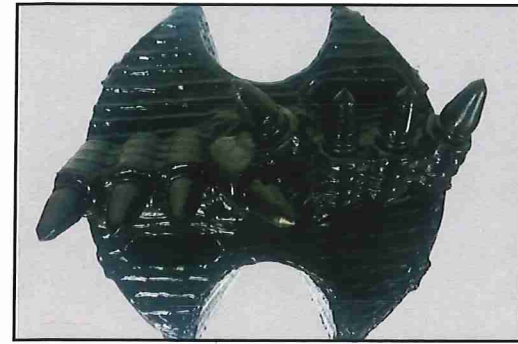


800-248-8498

WWW.APEVIBRO.COM

APE POLAR PENETRATOR

Designed to be paired with our unique HD Drilling system and Quickloc Drill Casing, the Polar Penetrator series of bits can overcome many of the challenges that frozen and dense soils have presented. Custom connections and sizes can be added to adapt to whatever needs arise. General construction is made from 110 KSI steel, 1 1/4" T1 top and bottom plates, C30 Tooth Holders and C31 HD Teeth. Hard face strips run the radius and length of the body to ensure protection of the barrel when drilling through various soils.



Available Bit Size	Hole Diameter	Coupler	Teeth Size	Holder
9.625 Inch	10"	APE Quickloc or Custom	C31	C30
10.625 Inch	11" Cut	APE Quickloc or Custom	C31	C30
12 Inch	12.75" Cut	APE Quickloc or Custom	C31	C30
14 Inch	14.5" Cut	APE Quickloc or Custom	C31	C30
16 Inch	16.5" Cut	APE Quickloc or Custom	C31	C30
18 Inch	18.75" Cut	APE Quickloc or Custom	C31	C30
24 Inch	25" Cut	APE Quickloc or Custom	C31	C30
30 Inch	31" Cut	APE Quickloc or Custom	C31	C30

VERSATILITY IN THE FIELD

- Frozen Material
- Clays
- Sands/Silts
- 1" Minus

APPLICATIONS

- Open Holes
- Clearing Piling
- Hole Expansion
- Reaming

GENERAL CONSTRUCTION

- Wear Strips
- Fard Faced Wear Surfaces
- Heavy Wall Dom Body
- 1" Plate Material

